



Nordic Tire TM

The only one @ worldwide

Developed in Cooperation with  **rosenbauer**

and **EGENES** Norway
BRANNTÉKNIKK AS

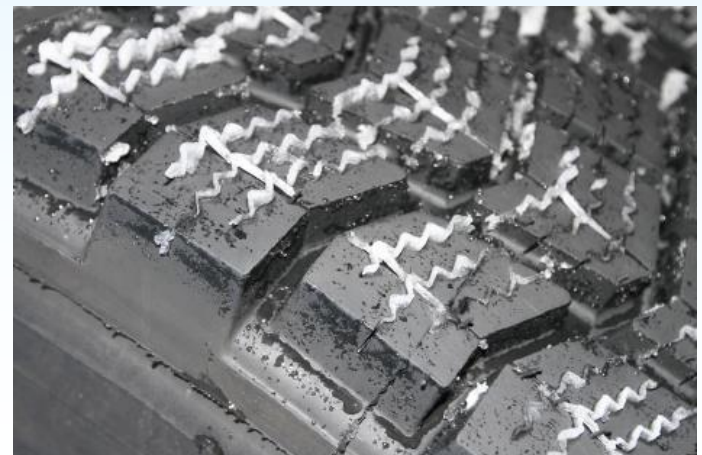


Tested,
approved and
used by the
**Royal Norwegian
Air Force**

The **SnowCross** range from **Nordic Tire** is a specific tyre solutions for high performance and safe service on snow and ice covered roads, runways or concrete surfaces. The development of these products complies with the requirements of single fitted AWD fire fighting trucks, rescue trucks, military or service trucks which have to perform well and reliably in the extreme hard and long lasting winter conditions in Nordic countries.

Nordic Tires fulfil the ECE R 109 standard for retread truck tires.

- **395/85 R 20 SnowCross APD 33-540**
- **16.00 R 20 SnowCross APD 38-600**
- **445/80 R 25 SnowCross APD 40-610**



SnowCross fitting: Key benefits

- As a real winter tire in 20 & 25 inch, SnowCross fits the rescue trucks with the full driving power
- No time and safety losses in rescue, military or service missions during hard winter conditions
- On ice and snow, SnowCross allows fast, safe, perfect and stress less driving
- The SnowCross tires offer a high level of GRIP without studs or other snow traction devices
- SnowCross is less expensive than off-road tires and offers by far the best winter performance on the market
- Experience from the ground: SnowCross can be smoothly used as all season tire. That makes the seasonal change-over needless

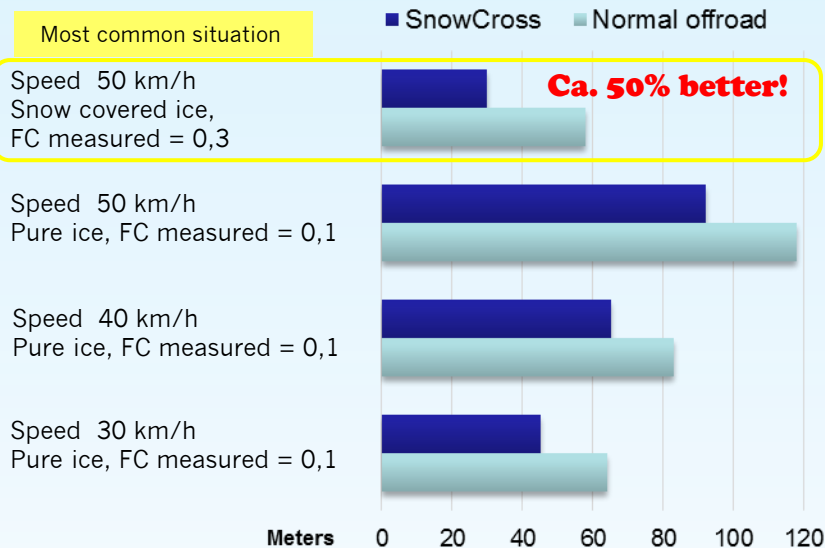


Driving performance measured at winter test track Oulu Airport, Finland

It was proved once again: A real winter tire allows faster and safer driving. Perfect for jobs where every second counts and time can save lives.

Braking Distance SnowCross versus normal offroad tire:

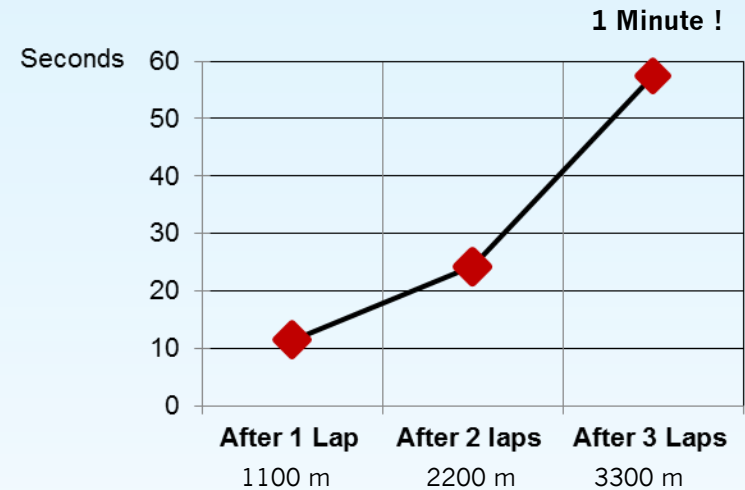
FC = Friction coefficient



Chasing Test as a simulation of time loss by vehicle with normal offroad tires versus SnowCross



Accumulated time lost when chasing SnowCross vehicle



Technical data	APD 33-540	APD 38-600	APD 40-610	SnowCross
<i>Tire size</i>	395/85R20	16.00R20	445/80R25	
<i>Load/Speed-Index</i>	168G	173G	170F	
<i>Load capacity</i>	5600 kg	6500 kg	6000 kg	
<i>Tread traction with</i>	33 cm	38 cm	40 cm	
<i>Rolling radius</i>	540 mm	600 mm	610 mm	
<i>Tread depth</i>	20 mm	20 mm	20 mm	
<i>High density wave sipping</i>	yes	yes	yes	
<i>IWS Tread Technology</i>	yes	yes	yes	
<i>Outside diameter</i>	1180 mm	1338 mm	1350 mm	
<i>Section with</i>	395 mm	440 mm	445 mm	
<i>Tubeless fitting</i>	yes	yes	yes	
<i>Fitting position</i>	All Position Drive	All Position Drive	All Position Drive	
<i>Retread process</i>	Full Mold hot	Full Mold Hot	Full Mold Hot	


When every second counts.....



..... and weather represent a threat to your fast,
reliable and safe mobility....



Than, the right tires are the key of safety. For AWD-Trucks only one: SnowCross

Distribution in Scandinavia through the  **rosenbauer** general agencies and tire retailers



NORWAY

EGENES
BRANNTÉKNIKK AS

Nulandsvika 3.
N-4400 FLEKKEFJORD
Phone: +47 3832 0800
www.egenes.as



SWEDEN

SALA BRAND

SALA BRAND AB
Box 64
SE-73321 SALA
Phone: +46 224 373 62
www.salabrand.se



Nibblingsvägen 14.
SE-89155 ARNÄSVALL
Phone: +46 660 542 16
www.gummigrossen.se



FINLAND



KULMALA AB
Linjatie 4
FI-01260 VANTAA
Phone: +358 9 8751 800
www.veljeksetkulmala.fi



BestDrive Finland Oy
Malminkartanonkuja 3
FI-00390 HELSINKI
Phone: +358 9 3299 0342
www.bestdrive.fi

 **Nordic Tire** TM 